

A Project by



**HARIVILLU
HOMES**

Since 2008



Suvana

by Harivillu Homes



Relax with ease
Refresh with breeze
Reconnect with Nature

Premium Farm Plots & Farm Villas
@ Vemula, NH 44, Bengaluru - Hyderabad Highway.



Rewind with Nature
Recharge with Luxury
Rekindle Your Dreams

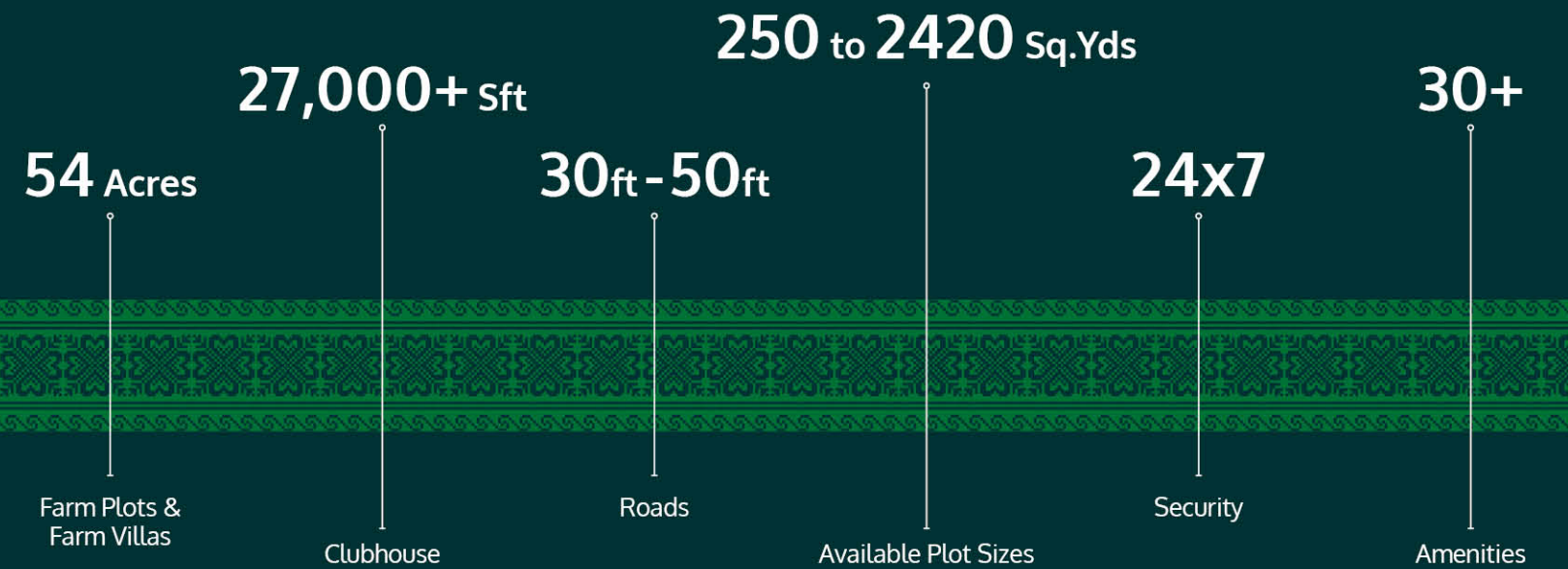
where green living gets a grand address.

Find



Where the Horizon Meets the Heart.

Discover the joy of owning a piece of nature with our premium Farm Plots & Farm Villas. Surrounded by scenic views, serene skies and soulful landscapes, this is more than just land - it's where your dream life begins. Whether you're planning your forever home or a weekend escape, find comfort, calm and connection at every sunrise. Welcome to your sanctuary, just a step away from the city, but miles into tranquility.





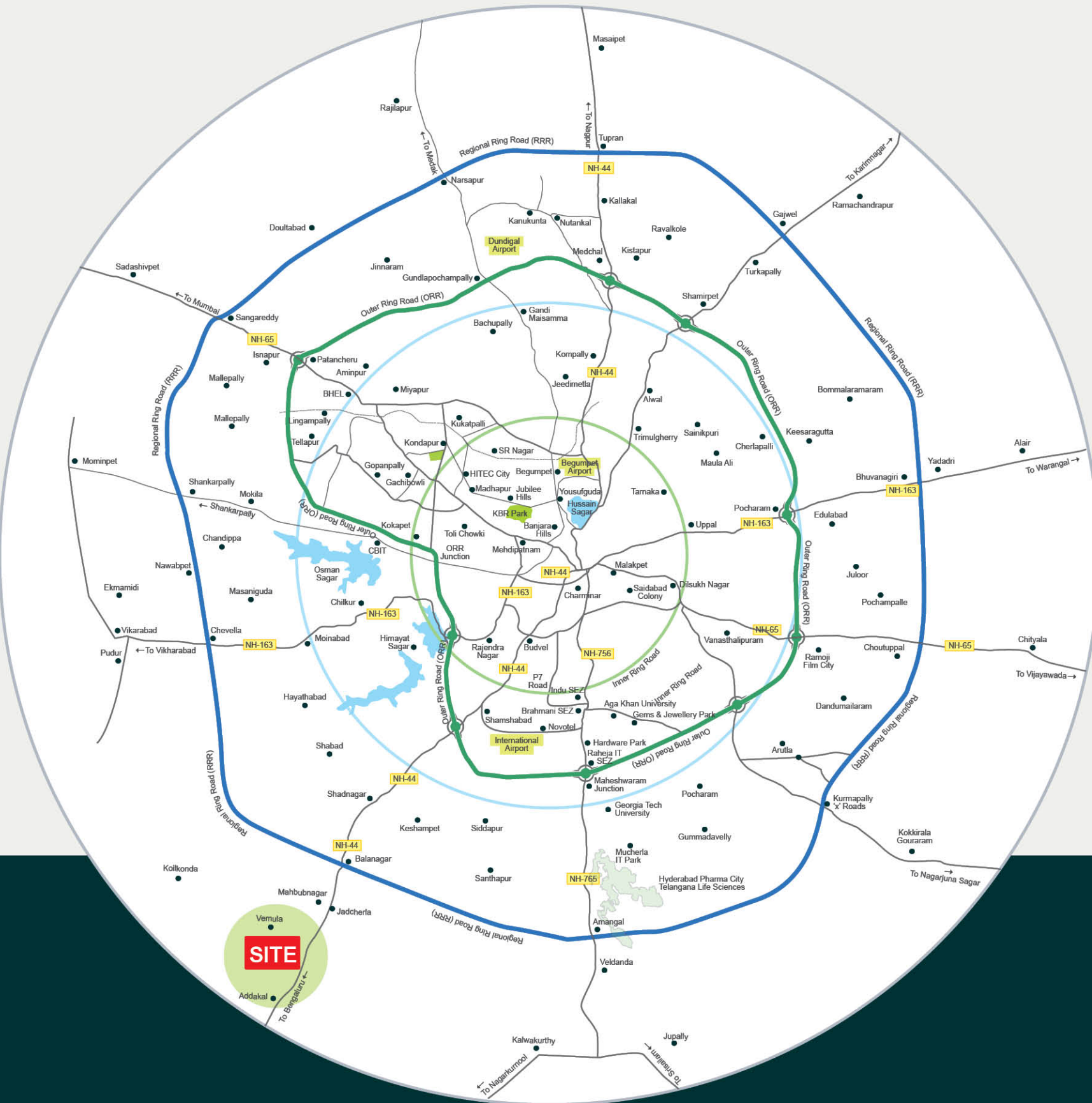
Return to Roots
Rise in Comfort
Rest in Nature

Where every entry feels like coming home to nature.

Step into Suvana a gateway to peaceful living and premium plotting. Designed for those who seek more than just land, Suvana welcomes you with a grand entrance that symbolizes elegance and promise. Whether you're building your forever home or planning a weekend retreat, this is where nature and luxury meet in harmony.

Surrounded by greenery and secured with smart infrastructure, every detail from the gates to the gardens reflects a commitment to quality and calm. Just minutes from the city, yet miles from the chaos.





Rediscover the Land
Reflect on Your Future
Rise with Every Mile

Location that offers both lifestyle and legacy.

Step into Suvana a premium plotted community that offers more than just land. Located in a green corridor with seamless connectivity, Suvana brings you closer to nature without compromising on urban convenience. Whether you're building your forever home or planning a peaceful retreat, Suvana ensures a life of comfort, security and smart investment. Every feature is carefully curated to give you a tranquil yet connected lifestyle just minutes away from city life, yet miles from the noise.



SUVANA
HAS
CHOSEN YOU

IT'S WITHIN
EVERYONE'S
BUDGET

INVESTMENT
IN REAL ESTATE
EXPENSIVE

INVEST ON AFFORDABLE FARMING LANDS
 AND AFFORDABLE FARM VILLAS
 EXPECTING HUGE DEMAND IN NEXT 5 YEARS.

NH-44 Bengaluru Highway



Master Layout Plan



Rejoice in Space
Reimagine Living
Revel in Every Corner

Suvana's layout gives structure to your dream life.

- Block - A
- Block - B
- Block - C



01. BUDDHA COURTYARD



02. OUTDOOR GAMES



03. CLUBHOUSE

Double your investment with
MAHOGANY PLANTATION



Secure your financial future and contribute to a greener planet with a **Mahogany Plantation** - a timeless investment in one of the world's most prized hardwoods. Renowned for its stunning beauty and exceptional durability, mahogany remains in high demand for luxury furniture, musical instruments, and high-end interiors.

- High-Value Returns
- Low-Effort, High-Growth
- Dual-Benefit Investment
- Eco-Friendly Legacy

ZERO
 Maintenance
 Charges

12-15
 Years Yield

50-50
 Profit Sharing



Note: These are projected values based on historical trends, inflation, & demand-supply dynamics. Actual prices may vary depending on market conditions.

Parameter	- Value/Range
Age at Maturity	- 12-15 years
Trunk Girth (at maturity)	- 60-90 cm (approx.)
Usable Wood Volume	- 10 to 20 cu.ft (conservative to well-maintained tree)





Relax in Nature
Refresh in Privacy
Recreate Your Vision

Design your dream villa amidst green surroundings.

DESIGN YOUR DREAM FARM VILLA - ONLY AT SUVANA.

Annual maintenance
by our team tailored to
suit your specific needs.

Earn ₹5,000 -
₹6,000 per night
rental income

Your perfect & private retreat
place, ideal for friends, family
and for every special occasion



Villa Type 01 - 1BHK



East Facing Villa

Welcome the sun every morning in your perfectly planned east-facing villa at Suvana. Designed with Vastu compliance and natural elegance, this space lets you live in harmony with nature while enjoying complete comfort.

Every inch reflects thoughtful planning from the flow of light and air to the layout that balances privacy with openness. Surrounded by greenery and finished with sophistication, this villa is your everyday escape into peaceful living.



Villa Type 02 - 2BHK



Return to Roots
Rise with the Sun
Rest in Tranquility

Crafted plots for bespoke farm villa living.

Area Statement

Plinth Area - 863.6 Sft
 Slab Area - 1200.0 Sft





Relax at Sunset
Recharge in Style
Reside in Balance

Because every dream home starts with the perfect plot.

Area Statement

Plinth Area - 863.6 Sft
 Slab Area - 1200.0 Sft

Villa Type 01 - 1BHK



West Facing Villa

Experience the golden hour from the comfort of your west-facing villa at Suvana. Designed for those who appreciate warm evenings and vibrant views, this villa combines aesthetic charm with functional planning.

From its modern architecture to its serene surroundings, every detail is thoughtfully laid out to ensure comfort, airflow and energy efficiency. Ideal for evening lovers, the west-facing villa offers a perfect blend of elegance, privacy & a deep connection with nature.

Make every sunset a celebration - right from your doorstep.



Villa Type 02 - 2BHK





Suvana's Club Aerial View



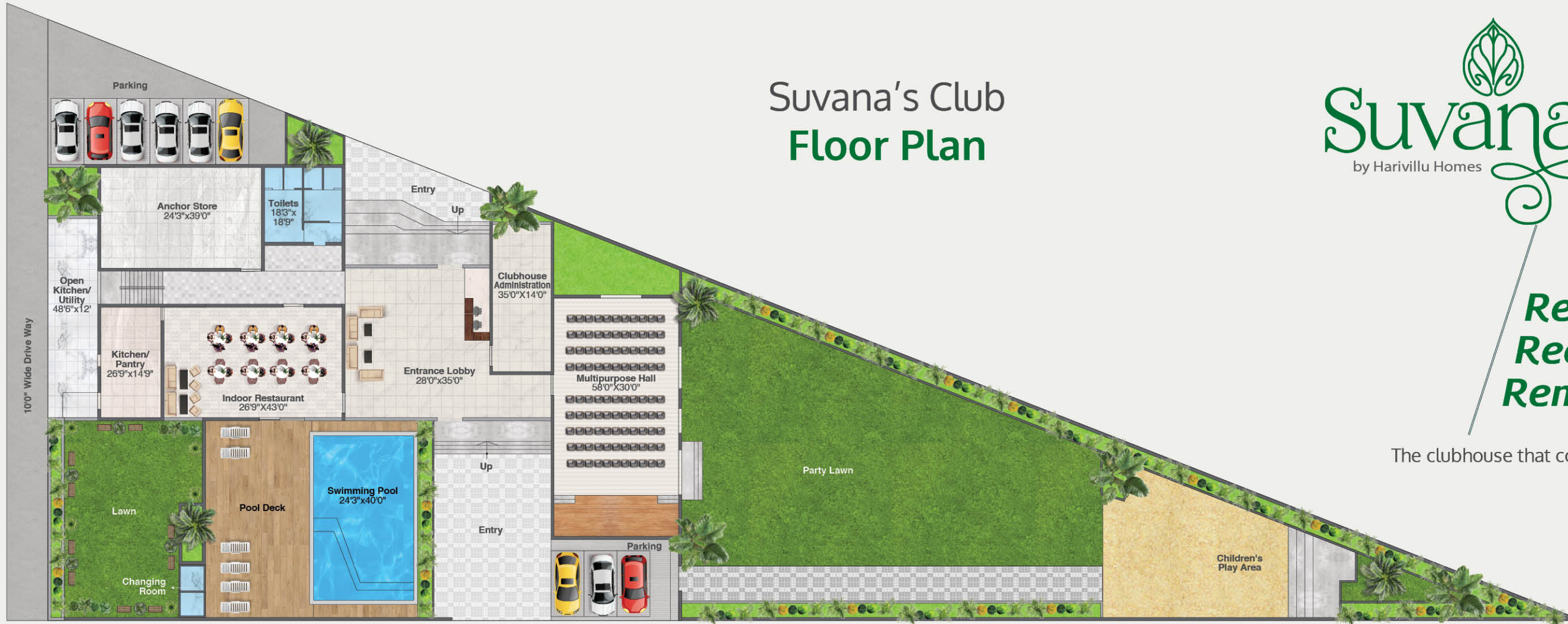
Recharge with Wellness
Rewind with Fun
Rejoice with Family

A space designed to delight every generation.

CLUB AMENITIES

- | | | | |
|--|---|--|--|
| 
Entrance Lounge | 
Party Lawn | 
Guest Rooms | 
Banquet Hall |
| 
Indoor Games | 
Outdoor Games | 
Walking Track | 
Swimming Pool |
| 
Multicuisine Restaurant | 
EV Charging Points | | |

Welcome to a place where luxury meets leisure - the Suvana Clubhouse. Built with elegance and packed with modern comforts, this space is perfect for fitness, relaxation and meaningful connections.



Ground Floor Plan



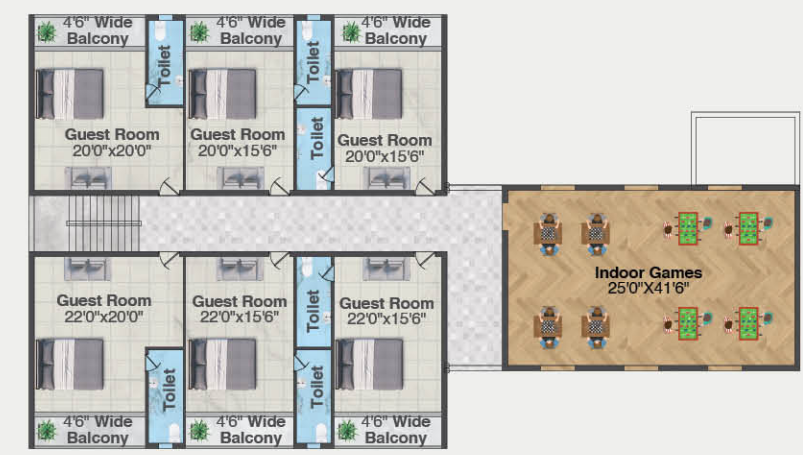
Refined Spaces
Recreational Vibes
Remarkable Memories

The clubhouse that completes your lifestyle.



Clubhouse It's a Lifestyle Hub

Every space within the clubhouse is curated with attention to detail, offering residents a perfect balance of leisure, luxury, and community living. Whether it's a quiet retreat or a lively get-together, this is where unforgettable experiences are made - all just a few steps from your home.



First Floor Plan



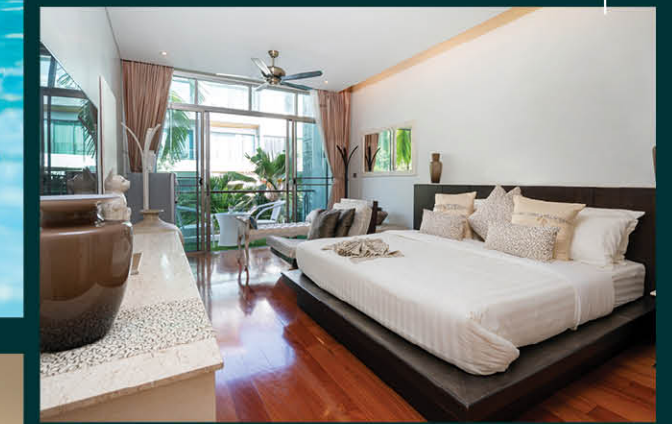
Outdoor Games



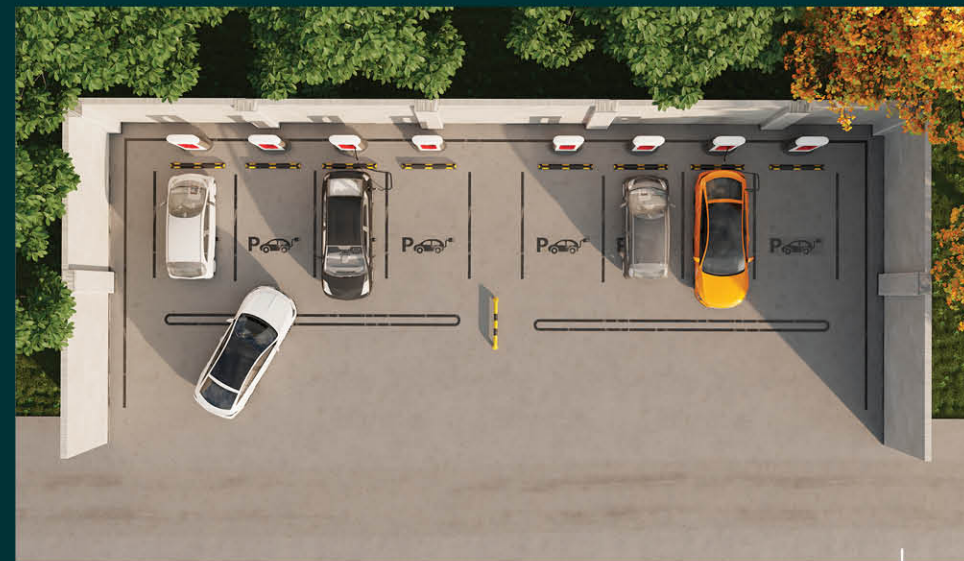
Swimming Pool



Guest Rooms



Indoor Games



EV Charging Points



Multicuisine Restaurant



Banquet Hall

Refined Spaces
Recreational Vibes
Remarkable Memories

The clubhouse that completes your lifestyle.

Whether it's a quiet evening by the pool, a weekend celebration, or a game with friends - our clubhouse is where life happens beyond the walls of your home.



Suvana

by Harivillu Homes

Remarkable Features
Refined Spaces
Reliable Living

Every highlight adds lasting value to your lifestyle.



PROJECT HIGHLIGHTS



Grand Entrance Arch



Mahogany Plantation



30ft - 50ft Roads



Landscaping

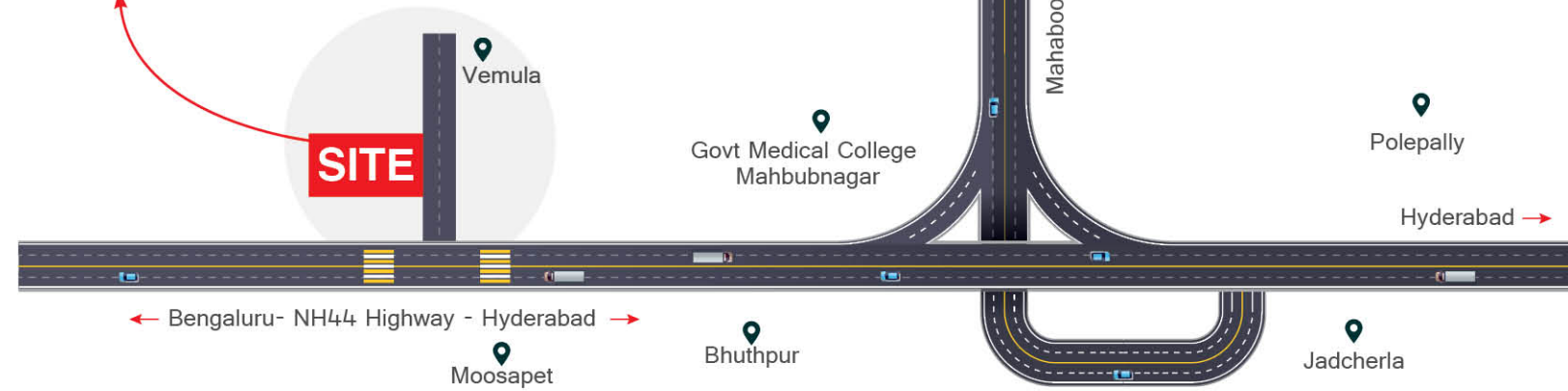


100% Vaastu

- Avenue Plantation
- Compound Wall
- 24x7 Security
- CCTV Surveillance
- Children's Play Area

- Underground Water Lines
- Clubhouse & Swimming Pool
- Exquisitely Designed Central Park
- Electricity with Designer Street Lights
- Indoor Cricket Turf

- Half Basket Ball Court
- Beach Volleyball Court
- Shuttle Court
- Amphitheater
- Buddha Courtyard



SOUTH HYDERABAD IS RAPIDLY SHAPING INTO ONE OF HYDERABAD'S MOST DYNAMIC REAL ESTATE CORRIDORS

South Hyderabad has transitioned from latent potential to an active investment hotspot, bolstered by infrastructure, employment generation, and affordability. While short-term volatility may linger, the long-term outlook (3–5 years) looks promising. This region is now firmly on the radar of savvy investors and end-users looking for balanced growth and aspirational living.



CONNECTIVITY

- Bengaluru-Hyd Highway - 2 mins
- Mahabubnagar - 25 mins
- Jadcherla - 25 mins
- Regional Ring Road - 30 mins
- Shamshabad Airport - 80 mins

SPIRITUAL

- Kanha Shanti Vanam - 65 mins
- Statue of Equality - 75 mins
- Shadnagar Balaji Temple - 50 mins

BUSINESS

- Polepally SEZ - 35 mins
- Elkatta SEZ - 50 mins
- Microsoft Datacenter - 75 mins
- Welspun Flooring - 70 mins



Harivillu Homes Pvt, Ltd, has a legacy of over 18 years of real estate experience in the venturing segment & open plots. We are dedicated to forming a wholesome living experience with business acumen and high-level expertise. Our sole motto is to provide incredible investment opportunities which are uniquely designed with the best infrastructure and immense attention to detail.

Harivillu Homes also takes pride in guiding you through intelligent investment at prominent locations. We also ensure that these choices of plots & lots are great and that will open up avenues to an excellent investment opportunity for you.

COMPLETED PROJECTS

<p>DTCP Layout @ Saduvelli DTCP Approved Layout 300 Acres</p>	<p>YTD A Approved Layout 23 Acres</p>	<p>Farm Plots @ Nemila Farm Plots 100 Acres</p>	<p>DTCP Layout @ Nemila DTCP Approved Layout 25 Acres</p>
---	---	---	---

EXCLUSIVE MARKETING PARTNER

<p>A Project by KAVUYI HILLS Developers (P) Ltd. Premium Villas @ Tukuguda Gated Community Villas 446 Luxury Villas</p>	<p>1 BHK & 2 BHK Apartments @ Pati</p>	<p>2 & 3 BHK Apartments @ Turkayamjal, Hyderabad.</p>	<p>2 & 3 BHK Apartments @ Ghatkesar, Hyderabad.</p>
---	--	---	---

TEAM

Association with



Plot No. 43, Sagar Co-op Housing Society, Road No. 2, Banjara Hills, Hyderabad, Telangana - 500 034.

Architects



B5, 2nd Floor, Kapil Complex, KPHB 6th Phase, Kukatpally, Hyd. www.a360studio.com

3D Renders & Walkthrough



Beside BOB Bank, Tanasha Nagar, Manikonda, Hyderabad. Email: az3dstudios@gmail.com

Concept & Design



Kalyan's Anshita Pride, Ground Floor, Beside City Union Bank, Manikonda, www.tactadvertising.in

www.harivilluhomes.com



Office Address:

Plot No 109, Shashank Towers, 3rd Floor,
Uppal Bagayath Layout, Nagole, Hyderabad, Telangana - 500 039.
contact@harivilluhomes.com

Site Address: Bengaluru - Hyderabad Highway, Vemula,
Komireddipalle (V), Moosapet (M), Mahbubnagar (Dist), T.G. - 509 001.

 Follow /harivilluhomes